

DIESEL FUEL INJECTION SPECIALISTS



**March 2025 Vendor Spotlight:  
Bosch Diesel Parts**

**Call us at (740) 392-3693**

# Vendor Spotlight

Quality Aftermarket Diesel Engine Parts



# BOSCH



**BOSCH**

**Why Choose Bosch?**

# The Bosch OE Difference

- ▶ Bosch Original Equipment (OE) engineers ensure the highest quality, performance and durability in the development of diesel aftermarket parts.
- ▶ Bosch tested and evaluated numerous remanufactured or rebuilt common rail fuel injectors available in the market, where more than 50 percent failed.
- ▶ The Bosch OE Difference is based on the foundation of delivering aftermarket parts that provide the Fit, Form & Function of the original part, with Function characterized by the following key criteria:
  - ▶ OE Performance
  - ▶ OE Reliability
  - ▶ OE Durability

# Bosch Authorized Diesel Location



We specialize in the reparation of all conventional diesel injection pumps and their related parts.



We are experts in on-vehicle diagnostics and repair of diesel powered vehicles, using genuine Bosch parts to service vehicles.



**BOSCH**

## Supported Applications

**Light / Medium / Heavy-Duty Diesel Fuel  
Injectors and Injection Pumps**

Ford 6.7L

GM Duramax 6.6L

Cummins 5.9L & 6.7L

Navistar MaxxForce

Detroit DD13/15/16

Detroit Series 50/60

# Ford Power Stroke 6.7L

| Model Year  | Application                               | Description                              | Part Number                    | Description                      | Part Number                    |
|-------------|---|--|--------------------------------|----------------------------------|--------------------------------|
| 2020        | F-250/F-350<br>F-450/F-550<br>F-650/F-750 | CR Injector (REMAN)<br>CR Injector (NEW) | Not Available<br>0 445 118 027 | CR Pump (REMAN)<br>CR Pump (NEW) | Not Available<br>0 445 010 859 |
| 2015 – 2019 | F-250/F-350<br>F-450/F-550<br>F-650/F-750 | CR Injector (REMAN)<br>CR Injector (NEW) | 0 986 435 433<br>0 445 117 043 | CR Pump (REMAN)<br>CR Pump (NEW) | 0 986 437 441<br>0 445 010 810 |
| 2016 – 2016 | F-350/F-450<br>F-550 (Cab &<br>Chassis)   | CR Injector (REMAN)<br>CR Injector (NEW) | 0 986 435 415<br>0 445 117 023 | CR Pump (REMAN)<br>CR Pump (NEW) | 0 986 437 422<br>0 445 010 851 |
| 2011 – 2014 | F-250/F-350<br>F-450/F-550                | CR Injector (REMAN)<br>CR Injector (NEW) | 0 986 435 415<br>0 445 117 023 | CR Pump (REMAN)<br>CR Pump (NEW) | 0 986 437 422<br>0 445 010 851 |

# GM Duramax 6.6L

| Model Year           | Application   | Description                              | Part Number                    | Description                      | Part Number                    |
|----------------------|---|--|--------------------------------|----------------------------------|--------------------------------|
| 2010 – 2016<br>LGH   | Silverado, Sierra<br>(Model year 2011 – 2012 only)<br>Express, Savana (All model years) | CR Injector (REMAN)<br>CR Injector (NEW) | 0 986 435 409<br>0 445 117 008 | CR Pump (REMAN)<br>CR Pump (NEW) | 0 986 437 421<br>0 445 010 817 |
| 2011 – 2016<br>LML   | Silverado 3500HD, Silverado<br>2500HD, Sierra 3500HD, Sierra<br>2500HD                  | CR Injector (REMAN)<br>CR Injector (NEW) | 0 986 435 410<br>0 445 117 010 | CR Pump (REMAN)<br>CR Pump (NEW) | 0 986 437 421<br>0 445 010 817 |
| 2007 – 2010<br>LMM   | Express, Savana, Silverado, Sierra,<br>Kodiak, Topkick                                  | CR Injector (REMAN)<br>CR Injector (NEW) | 0 986 435 520<br>0 445 120 082 | CR Pump (REMAN)<br>CR Pump (NEW) | 0 986 437 332<br>0 445 020 105 |
| 2006<br>LBZ          | Express, Savana, Silverado, Sierra,<br>Kodiak, Topkick                                  | CR Injector (REMAN)<br>CR Injector (NEW) | 0 986 435 521<br>0 445 120 042 | CR Pump (REMAN)<br>CR Pump (NEW) | 0 986 437 332<br>0 445 020 105 |
| 2004.5 – 2005<br>LLY | 2500HD, 3500, Kodiak, Topkick   | CR Injector (REMAN)<br>CR Injector (NEW) | 0 986 435 504<br>0 445 120 027 | CR Pump (REMAN)<br>CR Pump (NEW) | 0 986 437 308<br>0 445 020 030 |
| 2001.5 – 2004<br>LB7 | 2500HD, 3500, Kodiak, Topkick   | CR Injector (REMAN)<br>CR Injector (NEW) | 0 986 435 502<br>0 445 120 008 | CR Pump (REMAN)<br>CR Pump (NEW) | 0 986 437 303<br>0 445 020 017 |



Injectors are available for exchange and/or rebuild for the 6.2L and 6.5L. Call [740-392-3693](tel:740-392-3693) or email us at [parts@purrformancediesel.com](mailto:parts@purrformancediesel.com) for pricing and availability.



# Cummins 6.7L

| Model Year  | Application   | Description                              | Part Number                    | Description                      | Part Number                    |
|-------------|---------------|--|--------------------------------|----------------------------------|--------------------------------|
| 2019+       | Ram P/U       | CR Injector (REMAN)<br>CR Injector (NEW) | Not Available<br>0 445 124 047 | CR Pump (REMAN)<br>CR Pump (NEW) | Not Available<br>0 445 010 874 |
| 2013 – 2018 | Ram P/U       | CR Injector (REMAN)<br>CR Injector (NEW) | 0 986 435 621<br>0 445 120 342 | CR Pump (REMAN)<br>CR Pump (NEW) | 0 986 437 334<br>0 445 020 146 |
| 2007 – 2012 | Ram P/U       | CR Injector (REMAN)<br>CR Injector (NEW) | 0 986 435 518<br>0 445 120 193 | CR Pump (REMAN)<br>CR Pump (NEW) | 0 986 437 334<br>0 445 020 146 |
| 2013 – 2018 | Cab & Chassis | CR Injector (REMAN)<br>CR Injector (NEW) | 0 986 435 573<br>0 445 120 187 | CR Pump (REMAN)<br>CR Pump (NEW) | 0 986 437 334<br>0 445 020 146 |
| 2010 – 2012 | Cab & Chassis | CR Injector (REMAN)<br>CR Injector (NEW) | 0 986 435 574<br>0 445 120 188 | CR Pump (REMAN)<br>CR Pump (NEW) | 0 986 437 334<br>0 445 020 146 |
| 2007 – 2010 | Cab & Chassis | CR Injector (REMAN)<br>CR Injector (NEW) | 0 986 435 519<br>0 445 120 204 | CR Pump (REMAN)<br>CR Pump (NEW) | 0 986 437 334<br>0 445 020 146 |

# Cummins 5.9L

| Model Year  | Application | Description                              | Part Number                    | Description                      | Part Number                    |
|-------------|-------------|--|--------------------------------|----------------------------------|--------------------------------|
| 2005 – 2007 | Ram P/U     | CR Injector (REMAN)<br>CR Injector (NEW) | 0 986 435 505<br>0 445 120 238 | CR Pump (REMAN)<br>CR Pump (NEW) | 0 986 437 304<br>0 445 020 147 |
| 2004        | Ram P/U     | CR Injector (REMAN)<br>CR Injector (NEW) | <b>See Note*</b>               | CR Pump (REMAN)<br>CR Pump (NEW) | 0 986 437 304<br>0 445 020 147 |
| 2003        | Ram P/U     | CR Injector (REMAN)<br>CR Injector (NEW) | 0 986 435 503<br>0 445 120 255 | CR Pump (REMAN)<br>CR Pump (NEW) | 0 986 437 304<br>0445 020 147  |

**\*For product identification**, refer to CPL number on the engine dataplate.

If CPL=8213, 8228 or 8412 use 0 445 120 255 / 0 986 435 503

If CPL=8346, 8347, 8350 or 8351 use 0 445 128 238 / 0 986 435 505

Cummins 5.9L injectors are available for exchange and/or rebuild for model year 1988 – 2002. Call [740-392-3693](tel:740-392-3693) or email us at [parts@purrformancediesel.com](mailto:parts@purrformancediesel.com) for pricing and availability.



# Navistar Big Bore – MaxxForce

| Model Year  | Application             | Description  | Bosch Part No.                 | Navistar Part No. |
|-------------|-------------------------|--|--------------------------------|-------------------|
| 2017+       | MaxxForce, A26 Big Bore | Injector 12.4L   | 0 445 124 045                  | 2517613C91        |
| 2010 – 2017 | MaxxForce 11            | New Injector — MaxxForce 11<br>Reman Injector — MaxxForce 11 | 0 445 124 012<br>0 986 435 578 | 3005787C92<br>—   |
| 2010 – 2017 | MaxxForce 13            | New Injector — MaxxForce 13<br>Reman Injector — MaxxForce 13 | 0 445 124 010<br>0 986 435 577 | 3005783C92<br>—   |
| 2010 – 2017 | MaxxForce 11 & 13       | New High-Pressure Fuel Pump<br>Reman High-Pressure Fuel Pump | 0 445 020 126<br>0 986 437 506 | 3007641C93<br>—   |
| 2008 – 2009 | Big Bore                | New Injector — G11<br>Reman Injector — G11                   | 0 445 120 179<br>0 986 435 566 | 3005555C91<br>—   |
| 2008 – 2009 | Big Bore                | New Injector — G13<br>Reman Injector — G13                   | 0 445 120 180                  | 3005556C91        |
| 2008 – 2009 | Big Bore                | New High-Pressure Fuel Pump<br>Reman High-Pressure Fuel Pump | 0 445 020 080<br>0 986 437 358 | 3005063C1<br>—    |

# Detroit DD13, DD15, & DD16

| Engine | Liter | Description | Bosch New     | Bosch Reman   |
|--------|-------|-------------|---------------|---------------|
| DD13   | 12.8L | GEN 1       | 0 445 120 194 | 0 986 435 642 |
| DD13   | 12.8L | GEN 2       | 0 445 120 385 | 0 986 435 647 |
| DD15   | 14.8L | GEN 1       | 0 445 120 207 | 0 986 435 539 |
| DD15   | 14.8L | GEN 2       | 0 445 120 302 | 0 986 435 646 |
| DD16   | 15.6L | GEN 1       | 0 445 120 207 | 0 986 435 539 |
| DD16   | 15.6L | GEN 2       | 0 445 120 302 | 0 986 435 646 |

# Mack E7

| Year        | Model | New Pump      | Reman Pump    | Injector Assy.                                   |
|-------------|-------|---------------|---------------|--|
| 2003 – 2006 | E7    | 0 414 755 014 | 0 986 445 011 | 0 432 191 283 (460HP)<br>0 432 191 284           |
| 2001 – 2002 | E7    | 0 414 755 006 | 0 986 445 008 | 0 432 191 283 (460HP)<br>0 432 191 284           |
| 1998 – 2001 | E7    | 0 414 755 003 | 0 986 445 004 | 0 432 191 319 (427HP>)<br>0 432 191 320 (400HP<) |
| 1997        | E7    | 0 414 755 003 | 0 986 445 004 | Discontinued                                     |



- ✓ Choose wisely when considering remanufactured injectors. Non-OEM approved products may seem like a great deal, but they often contain components that deviate from original specifications, compromising performance.
- ✓ Don't risk settling for injectors that may not be better than what you're replacing.
- ✓ Choosing the right injector means choosing Bosch!

Call [740-392-3693](tel:740-392-3693) or email us at [parts@purrrformancediesel.com](mailto:parts@purrrformancediesel.com) for pricing and availability on injectors and injection pumps.



# Engine Parts Offered



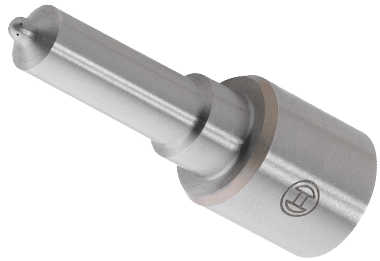
Glow Plugs



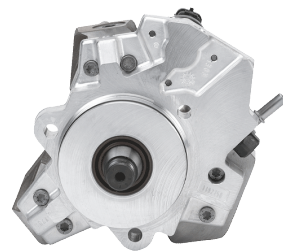
Genuine OE Injectors



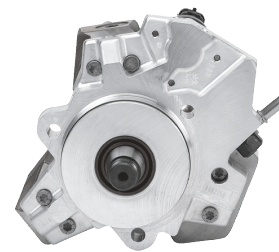
Reman Injectors



Nozzles



Reman Pumps



Genuine OE Pumps

# Glow Plugs



- ▶ Bosch DuraSpeed sheathed-element glow plugs heat up more quickly and retain their glow longer, ensuring that modern diesels are instantly ready to go – even at temperatures as low as – 28 °C.
- ▶ Bosch guarantees that every sheathed-element glow plug operates seamlessly inside the engine management system.



# Genuine OE Injectors



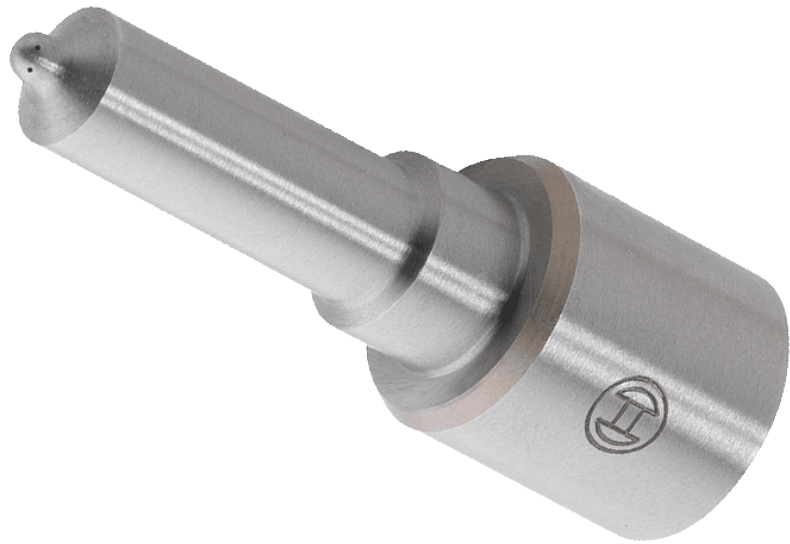
- ▶ Bosch is the leading OE supplier of diesel fuel systems for diesel passenger cars, SUVs, van and pickup trucks.
- ▶ Guaranteed to provide OE performance and meet all emission specifications.

# Remanufactured Fuel Injectors



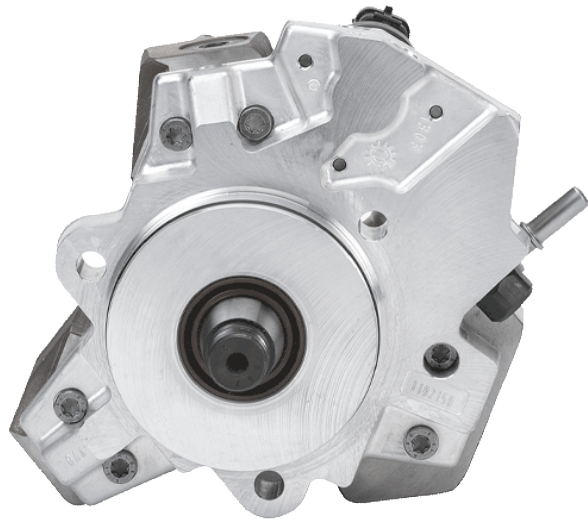
- ▶ Bosch's Remanufactured Diesel Injectors are produced at the same Bosch facility as the new diesel injectors.
- ▶ All wearable parts and critical components are replaced with genuine Bosch parts, and the latest original equipment production technology is used.

# Nozzles



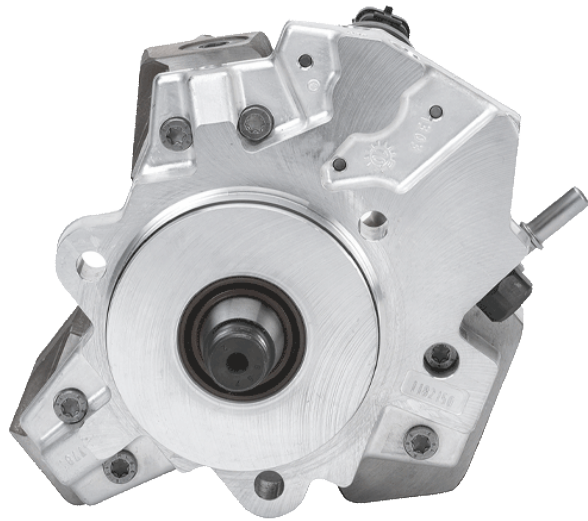
- ▶ Bosch Nozzles are designed to withstand the heavy demands of today's diesel engines.
- ▶ Each Bosch Nozzle is engineered for exacting precision and durability, to deliver a long, reliable service life for consistently superior diesel engine performance.

# Remanufactured High Pressure Pumps



- ▶ Bosch Remanufactured High Pressure Pumps are cost-effective and meet the same high standards and safeguards as brand new High Pressure Pumps.
- ▶ Bosch is the leading OE supplier of diesel fuel systems for diesel passenger cars, SUVs, van and pickup trucks.

# Genuine OE High Pressure Pumps



- ▶ Bosch High Pressure Pumps come standard on the majority of diesel vehicles, providing superior performance and durability.
- ▶ Bosch aftermarket products are produced to the same exacting specifications as our OEM products.

# Featured Product

## Bosch Remanufactured Injector 2011 – 2014 Ford 6.7L



**Part Number: 0 986 435 415**

**Price: \$280.00 / Each**

**Core: \$150.00 / Each**

**Warranty: 24 Month | Manufacturer Supplied**

***Prices Valid through March 2025. Subject to change at discretion of vendor.***



Purchasing a complete set will reduce the price per injector.

# Featured Product

## Bosch Remanufactured Injector 2007 – 2010 GM Duramax LMM 6.6L



**Part Number:** 0 986 435 520

**Price:** \$460.00 / Each

**Core:** \$150.00 / Each

**Warranty:** 24 Month | Manufacturer Supplied

*Prices Valid through March 2025. Subject to change at discretion of vendor.*



**BOSCH**

Purchasing a complete set will reduce the price per injector.

# Featured Product

## Bosch Remanufactured Injector 2013 – 2018 Cummins 6.7L



**Part Number: 0 986 435 621**

**Price: \$425.00 / Each**

**Core: \$150.00 / Each**

**Warranty: 24 Month | Manufacturer Supplied**

***Prices Valid through March 2025. Subject to change at discretion of vendor.***



Purchasing a complete set will reduce the price per injector.



# Featured Product

## Bosch Remanufactured Injector 2005 – 2007 Cummins 5.9L



**Part Number: 0 986 435 505**

**Price: \$385.00 / Each**

**Core: \$150.00 / Each**

**Warranty: 24 Month | Manufacturer Supplied**

***Prices Valid through March 2025. Subject to change at discretion of vendor.***



Purchasing a complete set will reduce the price per injector.

# Featured Product

## Bosch Remanufactured Injector 2008 – 2014 Detroit Diesel DD15 / DD16



**Part Number: 0 986 435 539**

**Price: \$460.00 / Each**

**Core: \$250.00 / Each**

**Warranty: 12 Month | Manufacturer Supplied**

***Prices Valid through March 2025. Subject to change at discretion of vendor.***



Purchasing a complete set will reduce the price per injector.

# Featured Product

## Bosch Remanufactured Injector 2001 – 2006 Mack E7 12.0L (460HP)



**Part Number:** 0 432 191 283

**Price:** \$140.00 / Each

**Core:** \$0.00 / Each

**Warranty:** 12 Month | Manufacturer Supplied

*Prices Valid through March 2025. Subject to change at discretion of vendor.*



Purchasing a complete set will reduce the price per injector.



Choose wisely when considering remanufactured injectors.

Non-OEM approved products may seem like a great deal, but they often contain components that deviate from original specifications, compromising performance.

Don't risk settling for injectors that may not be better than what you're replacing.

**Choosing the right injector means choosing Bosch!**



## Our Line Card

A select few of our aftermarket and OEM vendors



DIESEL FUEL INJECTION SPECIALISTS



- ▶ Let us know how we may help with your diesel engine parts needs!
- ▶ Call **740-392-3693** or email us at **[parts@purrformancediesel.com](mailto:parts@purrformancediesel.com)**